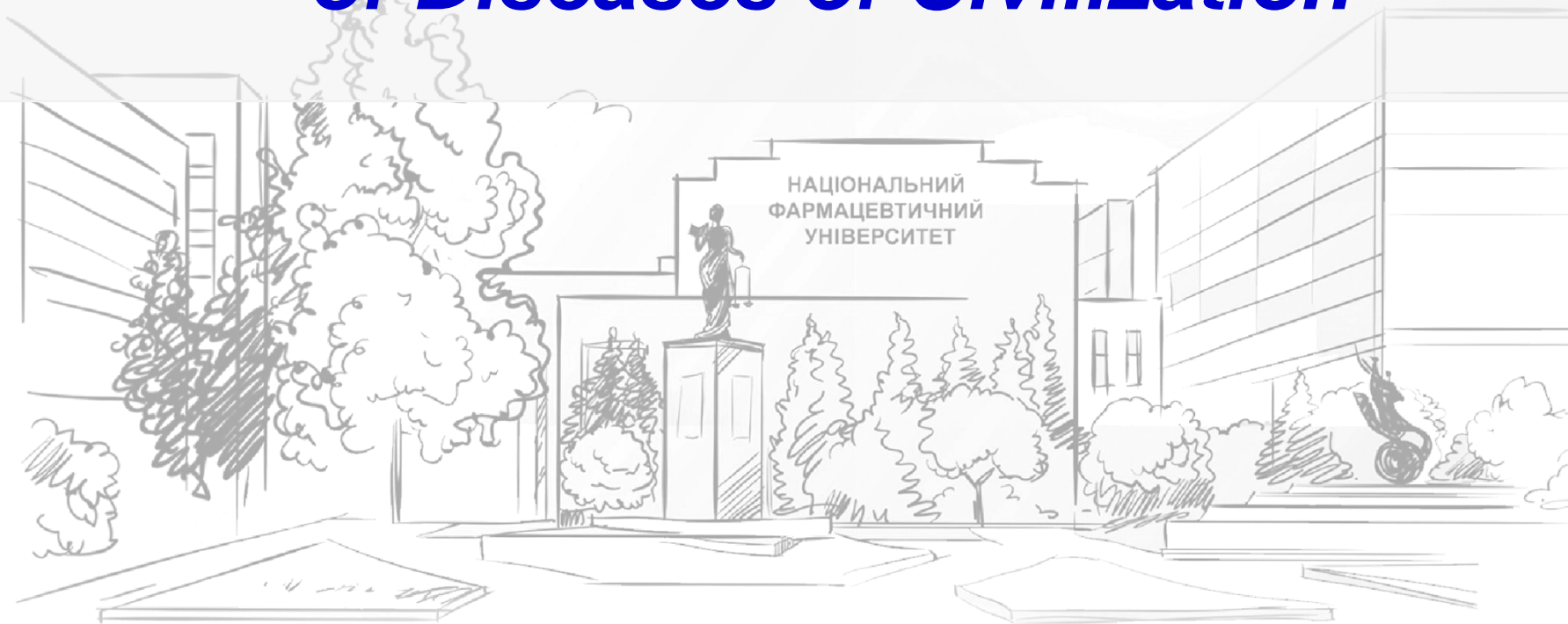




MINISTRY OF HEALTH OF UKRAINE
NATIONAL UNIVERSITY OF PHARMACY

the Department of Physiology and Pathological Physiology

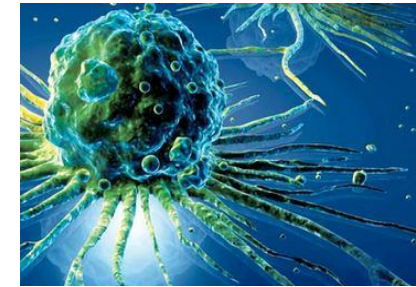
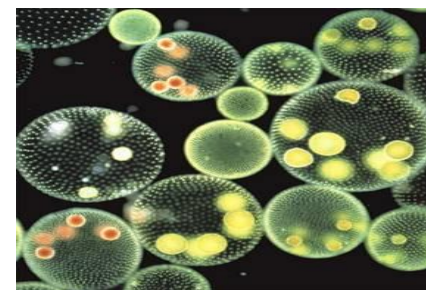
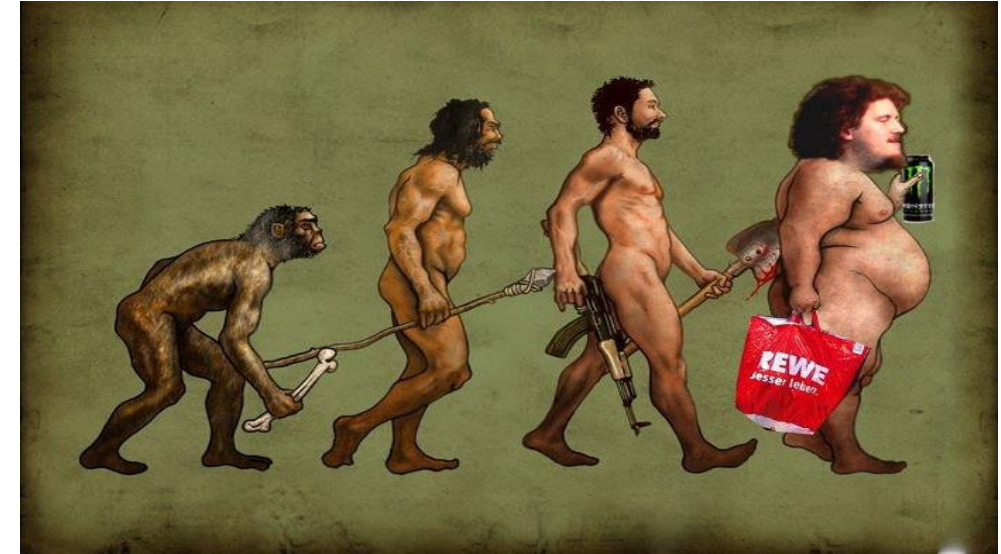
Pathological Physiology of Diseases of Civilization





Diseases of civilization

regularities of functioning of the patient's body, which occur at the level of cells, organs, systems and the patient's body as a whole and determine the mechanisms of occurrence, development of the most common diseases of civilization, their completion and consequences



The study of the educational component is allocated 90 hours/3 ECTS credits

How do the "diseases of civilization" complicate life?



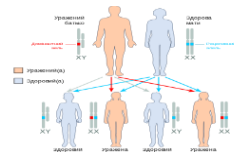
disrupt communication between people



reduce the quality and length of life



provoke a decrease in fertility



cause a further increase in the population of hereditary pathologies



result in disability



increase crime and create problems in society

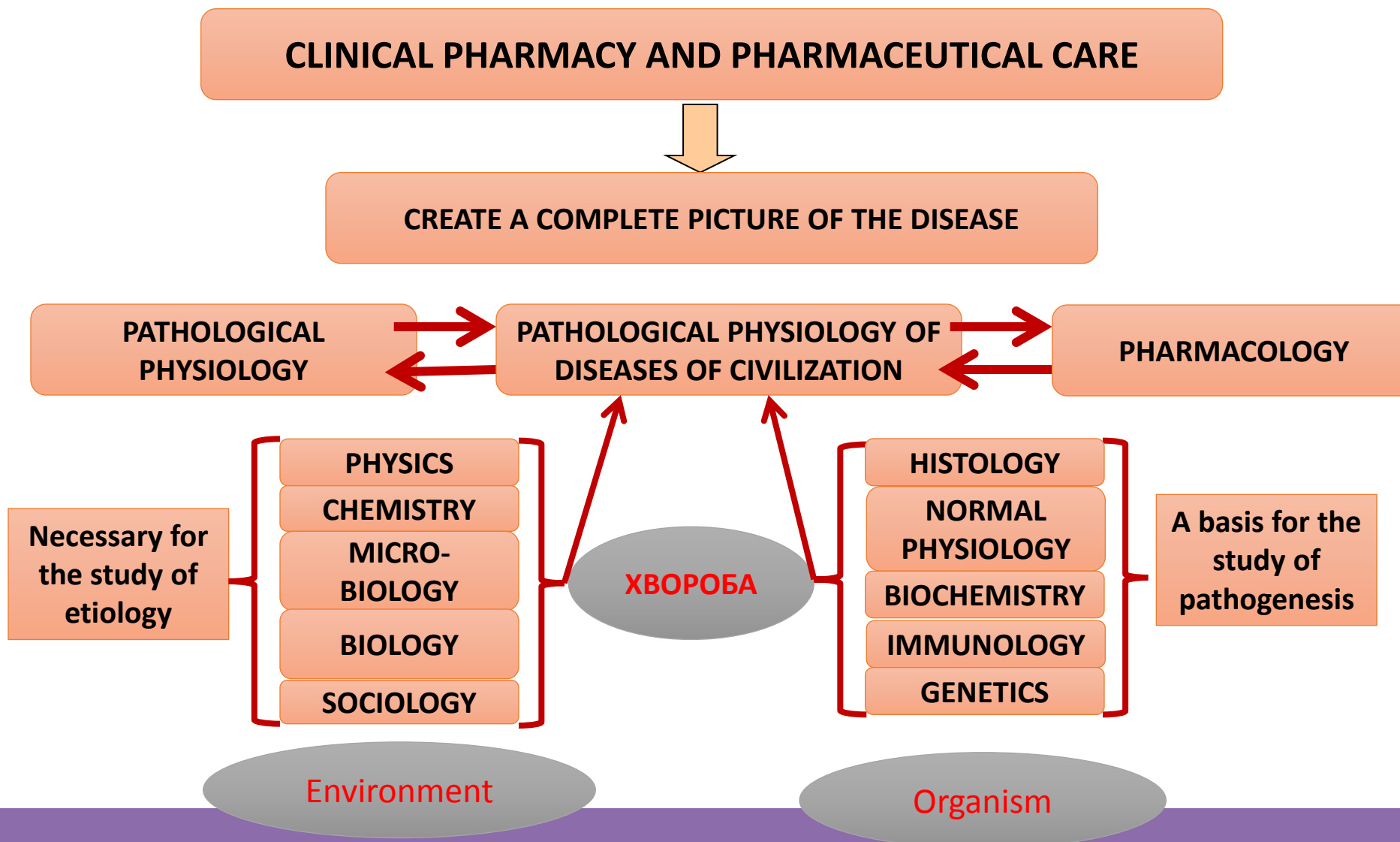


Diseases of civilization

- 1** ***Metabolic syndrome***
- 2** ***Obesity and food addictions (bulimia, anorexia)***
- 3** ***Diseases of addictive behavior and types of mental dependence***
- 4** ***Social toxicants***
- 5** ***Disorders of human mental health***
- 6** ***Iatrogenic diseases***
- 7** ***HIV infection. AIDS***
- 8** ***Sexually transmitted diseases***
- 9** ***Premenstrual syndrome***
- 10** ***Male and female infertility***



The connection of pathological physiology of diseases of civilization with other disciplines





Competencies that the student will acquire



Professional

PC 1. The ability to conduct sanitary and educational work among the population in order to prevent common diseases, prevent dangerous infectious, viral and parasitic diseases, as well as to promote timely detection and maintain adherence to treatment of these diseases in accordance with their biomedical characteristics and microbiological features.

PC 4. The ability to ensure the rational use of prescription and over-the-counter medicines and other pharmacy products in accordance with the physicochemical, pharmacological characteristics, biochemical, pathophysiological characteristics of a particular disease and pharmacotherapeutic regimens for its treatment.

Program learning outcomes

PLO 2. Apply knowledge of general and specialized disciplines in professional activities.

PLO 4. Demonstrate the ability to independently search, analyze and synthesize information from various sources and use these results to solve typical and complex specialized tasks of professional activity.

PLO 12. Analyze information obtained from scientific research, summarize, systematize and use it in professional activities.

PLO 13. Conduct sanitary and educational work in professional activities in the event of outbreaks of infectious, viral and parasitic diseases.

Personnel support

The Department of Normal and Pathological Physiology has sufficient conditions for conducting the educational process for the study of the educational component "Pathological Physiology of Diseases of Civilization"

1. Kononenko Nadiia, Doctor of Medical Sciences, Professor
2. Ribak Viktoria, Doctor of Biology, Professor
3. Chikitkina Valentyna, Candidate of Biology (PhD), Associate professor

Educational and methodological support

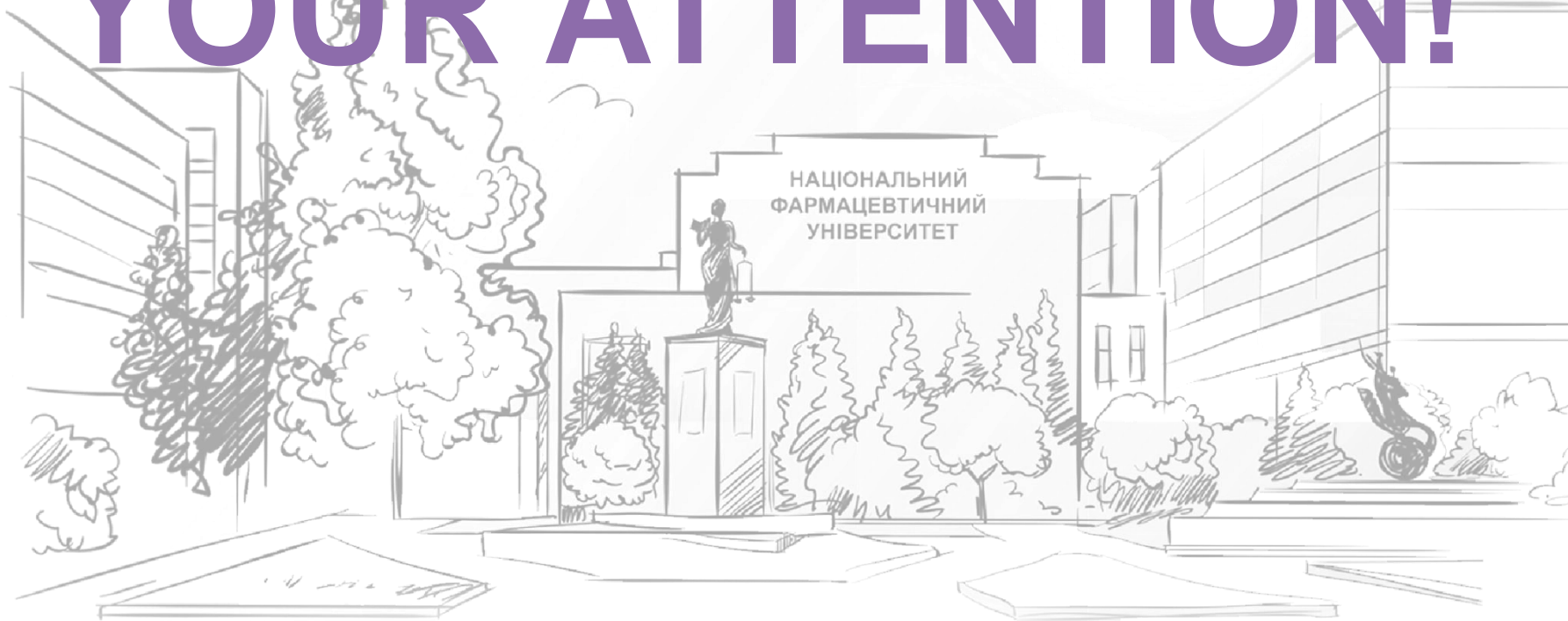
1. Curriculum.
2. Work program.
3. Silabus.
4. Presentations of lectures.
5. List of theoretical questions for current control.
6. Test tasks for current control.
7. Package of tickets for monitoring the mastery of the content.
8. Methodical recommendations for practical classes.
9. Methodical instructions for teachers.
10. Methodical recommendations for independent work.
11. Study guide.

Material and technical support

1. Notebook Asus A73E.
2. TV Bravis Led 55.
3. Personal computers.
4. Stopwatch COC26.
5. Digital blood pressure monitor DS-10a.
6. Blood glucose meter OneTouch Select.
7. Posters of pathological changes in human organs and systems.
8. Models of pathological changes in human organs and systems.
9. Electronic scales Ohaus Adventurer AR 1530.
10. pH meter/conductometer HI2550-02.
11. Thermostat TC-80M-2.
12. Centrifuge CM-70.
13. Spectrophotometer LabAnalit SP-UV1000.
14. Electric water distiller ДЕ-25.
15. Refrigerator «STINOL – 242Q» with freezer compartment.



THANK YOU FOR YOUR ATTENTION!



National University of Pharmacy
53, Pushkinska str, Kharkiv, 61002, Ukraine

E-mail: mail@nuph.edu.ua
<https://nuph.edu.ua>